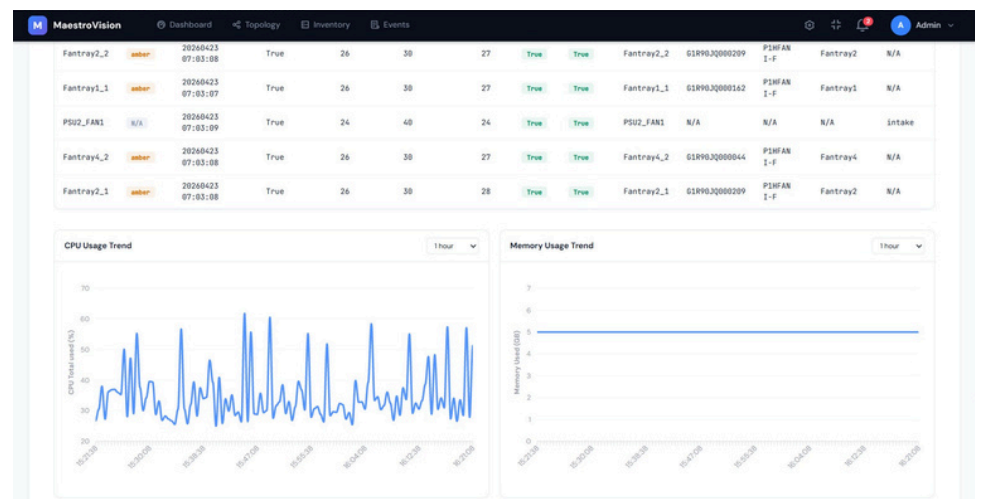


MAESTROVISION

Centralized Network Visibility & Management

MaestroVision is a centralized management platform that provides a single pane of glass for network visibility, offering users a comprehensive view across the entire monitoring devices topology.



It enables seamless configuration, monitoring, and management of network visibility deployments, streamlining operations for network and DevOps teams to maximize the ROI on visibility investments.

MaestroVision supports the automatic discovery and centralized management of hundreds of PacketMaestro and PacketMaestro PRO Network Packet Brokers, collecting network statistics and traffic telemetry with real-time graphic visualization.

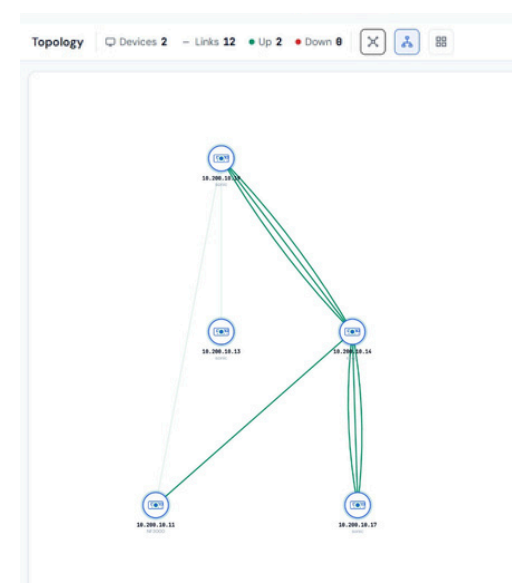
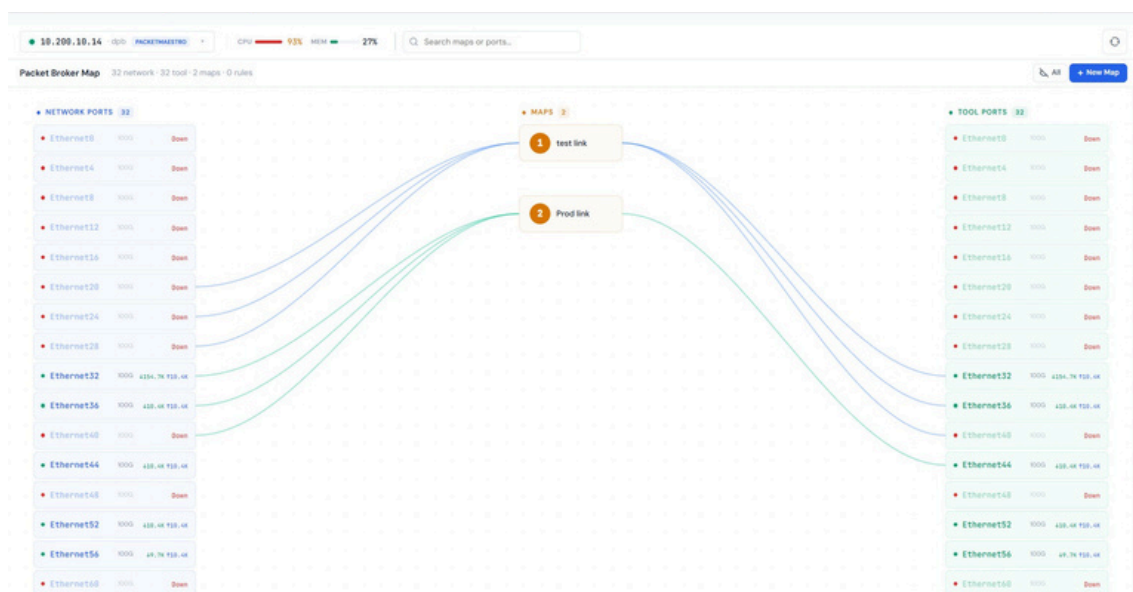
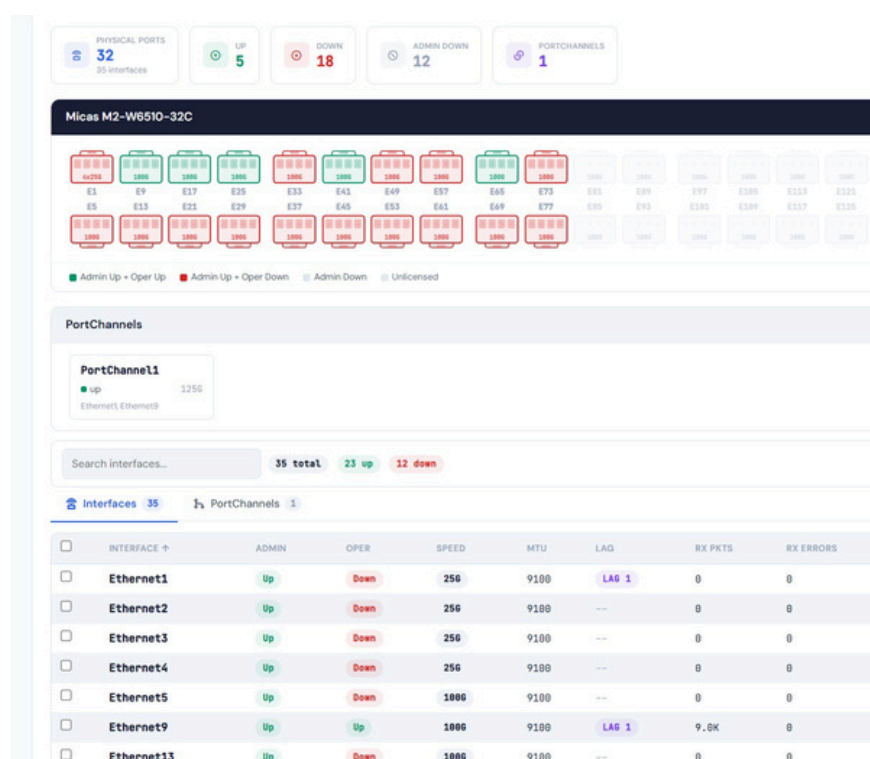
Key Features:

- **Single Pane of Glass:** MaestroVision provides a unified view across the monitoring devices topology for seamless configuration, monitoring, and management of visibility deployments.
- **Automatic Discovery and Centralized Management:** Supports the discovery and management of hundreds of PacketMaestro and PacketMaestro PRO Network Packet Brokers, with real-time visualization of network stats and traffic telemetry (licensed feature).
- **Device List and Map Rule Creation:** View all PacketMaestro devices in the network with drag-and-drop functionality for quick MAP rule creation.

- **Centralized Device Database and Advanced Search:** A centralized database enables quick searches, configuration of MAP filters, and advanced filter searches across devices.
- **Detailed Event Logging & Real-time Statistics:** Track user activity, configuration changes, and actions for improved auditing and monitoring. It delivers real-time statistics and traffic telemetry, helping teams maintain optimal network performance.

Version 3.2 Improvements:

- Welcome Dashboard screen enhancement
- Statistics displays improvements
- Addition of LDAP and TACACS authentication
- Secure SSL
- Updated PacketMaestro and PacketMaestro Pro configuration options
- Addition of topology screen
- SNMP configuration enhancements

The screenshot shows the 'Micas M2-W6510-32C' interface. It displays a summary of port status: 32 Physical Ports (35 interfaces), 5 Up, 18 Down, 12 Admin Down, and 1 PortChannels. Below this, there is a grid of port status indicators for various ports (E1, E9, E17, E25, E33, E41, E49, E57, E65, E73, E81, E89, E97, E105, E113, E121, E129, E137, E145, E153, E161, E169, E177, E185, E193, E201, E209, E217, E225). A legend indicates: Admin Up (green), Oper Up (blue), Admin Down (red), Oper Down (orange), Admin Down (grey), and Unlicensed (grey). Below the grid, there is a 'PortChannels' section showing 'PortChannel1' (up) with 'Ethernet1 Ethernet9'. A search bar shows '35 total', '23 up', and '12 down'. At the bottom, there is a table of interfaces:

INTERFACE	ADMIN	OPER	SPEED	MTU	LAG	RX PKTS	RX ERRORS
Ethernet1	Up	Down	256	9100	LAG 1	0	0
Ethernet2	Up	Down	256	9100	---	0	0
Ethernet3	Up	Down	256	9100	---	0	0
Ethernet4	Up	Down	256	9100	---	0	0
Ethernet5	Up	Down	1000	9100	---	0	0
Ethernet9	Up	Up	1000	9100	LAG 1	9,0K	0
Ethernet13	Up	Down	1000	9100	---	0	0



Ordering Information:

Part Number	Description
MV-NMS-L10	MaestroVision centralized management platform single pane of glass GUI for PacketMaestro and PacketMaestro Pro, Drag-and-drop interface, Centralized NMS device list, Advanced search and filter, Consolidated view, Detailed event logging up to 10x switches and/or DPUs
MV-NMS-L10-M&S	1-Year Software Maintenance & Support for MV-NMS-L10
MV-NMS-L25	MaestroVision centralized management platform single pane of glass GUI for PacketMaestro and PacketMaestro Pro, Drag-and-drop interface, Centralized NMS device list, Advanced search and filter, Consolidated view, Detailed event logging up to 25x switches and/or DPUs
MV-NMS-L25-M&S	1-Year Software Maintenance & Support for MV-NMS-L25


For a complete list of part numbers or more details, please reach out to our sales team at sales@ecin.ca or visit our website: www.ecin.ca

Notice

E.C.I. NETWORKS INC. reserves the right to modify or discontinue any product or service in this publication without notice to improve design or performance. Applications described are for illustrative purposes only.

Ready to Embrace the Open?

CONTACT US

 1-800-967-1672

 sales@ecin.ca

 [www:// ecin.ca](http://www.ecin.ca)