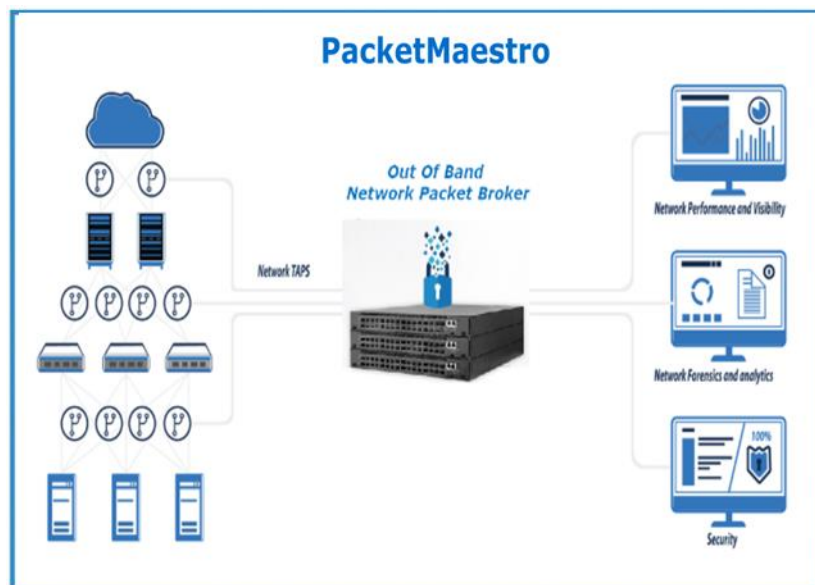


PACKETMAESTRO

Disaggregated Packet Broker



PacketMaestro, a disaggregated packet broker, provides advanced network visibility technology to gain insights into everything circulating through your network. It accelerates the deployment of management, monitoring, and security tools, eliminates blind spots in conventional architectures, and offers high-scale, multi-speed support with a competitive total cost of ownership (TCO).









Key Features

- Disaggregated and Open Visibility Solution: A flexible and cost-effective solution designed for network visibility, supporting Out-of-Band (OOB) deployment and advanced capabilities.
- Comprehensive Feature Set: Includes aggregation, replication, filtering, and load balancing with multi-filter support, VLAN tagging/untagging, and compatibility with both IPv4 and IPv6 protocols.
- Performance:
 - Supports up to 32x400G port speeds with flexible breakout options (40G to 4x10G, 100G to 4x25G, 400G to 4x100G).
 - Enables Layer 2 forwarding at multiple Tbps (full duplex).
 - Offers real-time port and packet statistics, complemented by SNMP alerts.
- Usability:
 - Intuitive drag-and-drop interface for seamless port configuration and link creation.
 - Advanced search and filtering capabilities streamline network management.
 - Comprehensive event logging to monitor user actions and configuration

changes.

- Deployment:
 - Space-efficient 1RU form factor to optimize rack space usage.
 - Hot-swappable, redundant power supplies and fans, available in AC and DC models.
- Management:
 - Centralized monitoring and management through a single pane of glass.
 - Accessible via GUI, CLI, and REST API for versatile control.
 - Seamlessly integrates with MaestroVision for unified monitoring across multiple devices.

Highlights

					
1G to 400G Network Packet Broker	Scalable 64 ports 100G/400G	Aggregation replication load balancing	Coherent ZR/ZR+ support	Filtering multiple filters simultaneously	Airflow, AC & DC PSU options

PacketMaestro value proposition

- Seamless Migration: Enables smooth transitions to open networks, reducing CAPEX/OPEX and enhancing Total Cost of Ownership (TCO) with a pay-as-you-grow model.
- Enhanced Flexibility: Decoupled hardware and software allow independent upgrades of key components like power supplies and fans.
- Multipurpose Hardware: Supports various applications like Data Center switches, reducing inventory, optimizing resources, and lowering costs.

Product Matrix

The following table provides a comparison of PacketMaestro models, highlighting port configurations, switching capacities, and additional features. For complete details, please contact our sales team.

ECIN P/N	PM10	PM25	PM100E	PM100R	PM100+	PM400	PM400+
	Base-T (RJ45)	SFP	QSFP28	QSFP28	QSFP28	QSFP28-DD	QSFP28-DD
1G	48	48	0	0	0	0	0
10G	24 with Breakout	48 (+32 w/t Breakout)	128 w/t Breakout	128 w/t Breakout	256 w/t Breakout	0	0

25G	0	48 (+32 w/t Breakout)	128 w/t Breakout	128 w/t Breakout	256 w/t Breakout	128	0
40G	6	8	32	32	64	0	0
100G	0	8	32	32	64	128	0
400G	0	0	0	0	0	32	64
400G ZR/ZR+							16
Management OOB	1	1	1	1	1	1	1
Console RJ45 serial	1	1	1	1	1	1	1
USB2.0	1	1	1	1	1	1	1
switching capacity	720Gbps	2.56 Tbps	3.2Tbps	3.2Tbps	6.4 Tbps	12.8 Tbps (Full Duplex)	51.2 Tbps
Packet forwarding	424 Mpps	1920 Mpps	1.52 Bpps	2003.4Mpps	1.52 Bpps	5.21 Bpps	10.6 Bpps
Vlans	4K	4K	4K	4K	4K	4K	4K
Chipset	BCM TD2	BCM TD3	BCM TMH2 (56960)	BCM TD3 (56870)	BCM TMH2	BCM TMH3 (56980)	BCM TMH4 (56990)
Power supplies	1+1R	1+1R	1+1R	1+1R	1+1R	1+1R	2+2R
Input Voltage	AC/DC	AC/DC	AC/DC	AC/DC	AC/DC	AC	AC/DC
Fans	4+1R	3+1R	5+1R	4+1R	3+1R	5+1R	7+1R
Air Flow	F2B/B2F	F2B/B2F	F2B/B2F	F2B/B2F	F2B/B2F	F2B/B2F	F2B
OS	SONIC	SONIC	SONIC	SONIC	SONIC	SONIC	SONIC
Max Power consumption	348W	300W	550W	450W	550W	2100W	2500W
Dimensions mm	473x442x44 mm	442x387x44 mm	438x515x44 mm	442x560x44 mm	438x515x44 mm	43.84x53.6x4.31	442x175x760
Weight	21 lb	17.64 lb (8Kg)	24 lb	22.7 lb (10.3 Kg)	24 lb	24.38 lb (11.6 Kg)	96 lb (42 Kg)

Ordering Information

- Software Licensing: Our modular, port-based licensing allows for flexibility and scalability. Perpetual licenses are available with maintenance and support included.
- Hardware Bundles: Comprehensive kits include hardware and software bundles with AC/DC PSU options, along with 3-year maintenance and support.

Model	Type	Part Number	Description
Fully licensed System			
PM400+	SW	PM400+-400G-SW-PERP	PacketMaestro PM400+ 400G Perpetual license, maintenance and support included (per switch)
PM400	SW	PM400-400G-SW-PERP	PacketMaestro PM400 400G Perpetual license, maintenance and support included (per switch)
PM100+	SW	PM100+-100G-SW-PERP	PacketMaestro PM100+ 100G Perpetual license, maintenance and support included (per switch)
PM100	SW	PM100-100G-SW-PERP	PacketMaestro PM100 100G Perpetual license, maintenance and support included (per switch)
PM25	SW	PM25-25G-SW-PERP	PacketMaestro PM25 25G Perpetual license, maintenance and support included (per switch)
PM10	SW	PM10C-10G-SW-PERP	PacketMaestro PM10 10G Perpetual license, maintenance and support included (per switch)

Model	Type	Part Number	Description
Fully licensed Kits			
PM400+	KIT	PM400+-64x400G-F-AC-M	PacketMaestro Kit, Open Switch 64x400G ports F2B, AC PSU + PM400+M Software + 3Y M&S included
PM400	KIT	PM400E-32x400G-F-AC	PacketMaestro Kit, Open Switch 32x400G ports F2B, AC PSU + PM400E Software + 3Y M&S included
PM100+	KIT	PM100+E-64x100G-F-AC	PacketMaestro Kit, Open Switch 64x100G ports F2B, AC PSU + PM100+E Software + 3Y M&S included
PM100	KIT	PM100-32x100G-F-AC-M	PacketMaestro Kit, Open Switch 32x100G ports F2B, AC PSU + PM100 Software + 3Y M&S included
PM25	KIT	PM25-48x25G-F-AC-M	PacketMaestro Kit, Open Switch 48x25G ports F2B, AC PSU + PM25 Software + 3Y M&S included
PM10	KIT	PM10C-48x10GC-F-AC	PacketMaestro Kit, Open Switch 48x10G Copper ports F2B, AC PSU + PM10C Software + 3Y M&S included

For a complete list of part numbers or more details, please reach out to our sales team at sales@ecin.ca or visit our website.

Additional Solutions

- PacketMaestro Pro: Advanced-Data Processing (ADP) solution optimized for DPU-based network analysis. Features include Deduplication, Packet Trimming, Packet Splicing, and more, delivering unparalleled visibility into 4G/5G traffic and beyond.
- MaestroVision: Centralized management platform offering a single pane of glass for unified network monitoring and real-time traffic visualization across PacketMaestro devices.

Notice

E.C.I. NETWORKS reserves the right to modify or discontinue any product or service in this publication without notice to improve design or performance. Applications described are for illustrative purposes only.

Contact

- **Office:** 1-800-967-1672
- **Fax:** 1-855-201-7283
- **Email:** sales@ecin.ca
- **Website:** ecin.ca
- **HQ:** 1405 Trans-Canadian, Suite 410, Dorval, QC, H9P 2V9